



Think Green
2021-2-PL01-KA210-
SCH-000051185



GRADINITA CU PROGRAM
PRELUNGIT NR.22, IASI,
ROMANIA

Expansion of Iasi

A CITY THAT TENDS TO BECOME A METROPOLISLOR
AMET.

URBAN SPREAD



Co-funded by
the European Union





Iași (delivering Iasi and Târgu' Iesilor; history Jassy or Iassy, German: Jassy, Hungarian: Jászvásár, Italian: Iasi or Jassi, Belarusian: Горад Ясы, Bulgarian: Яу, Serbian: Stara Ias, Greek: Jási, Turkish: Yaş, Polish: Narodowie Jassy, Ukrainian: Яссу, Croatian: Jaši, Russian: Яссы, Lithuanian: Jasai) is the capital city of the county of the same name, Moldova, Romania.

IASI WAS THE CAPITAL OF MOLDAVIA FROM 1564 TO 1859, ONE OF THE TWO CAPITALS OF THE UNITED PRINCIPALITIES FROM 1859 TO 1862, AND THE CAPITAL OF THE KINGDOM OF ROMANIA FROM 1916 TO 1918.

ACCORDING TO THE 2011 CENSUS, IASI HAD A POPULATION OF 290,422 AND WAS THE FOURTH LARGEST CITY IN ROMANIA. THE IASI METROPOLITAN AREA, WHICH INCLUDES 13 NEIGHBORING LOCALITIES, HAD AN ESTIMATED POPULATION AT THE BEGINNING OF 2016 AT 472,733 INHABITANTS. IT HAS AN AREA OF 9,391 HA.



Old aerial view of the city center (Unirii Square area)

Old image of Lăpuşneanu Street





Iasi, panorama to Palas Shopping Center and Palace of Culture



Iasi, panorama to some of the neighborhoods

The city of Iasi is one of the largest cities of Romania, which is demonstrated both by its surface, the number of inhabitants but also due to the opportunities offered. Iasi has the oldest university in the country "Alexandru Ioan Cuza", one of the most spectacular train stations, but also an international airport.



"Alexandru Ioan Cuza" University

The Great Railway Station



Iasi International Airport

Iasi Metropolitan Area



The Iași Metropolitan Area is a metropolitan area in Iași County, Moldova, Romania comprising the municipality of Iași and 26 neighboring communes, established with the purpose of creating new business opportunities, building and arranging homes and places for recreation, attracting more consistent investments, and better coordinating environmental and infrastructure projects.

The main districts of Iasi are:

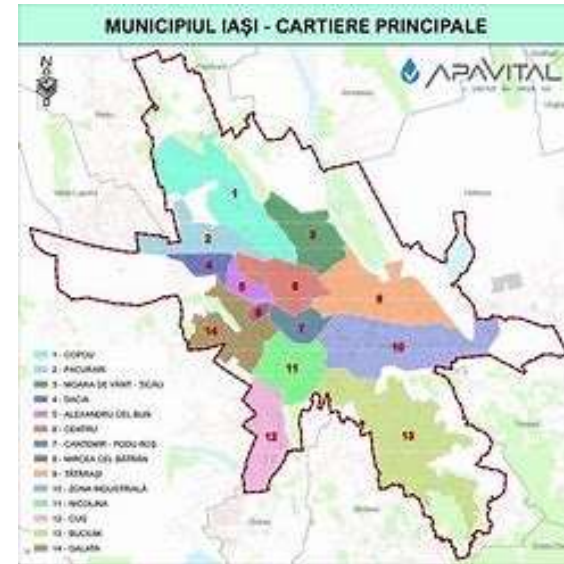
North: Copou, Țicău, Sărărie, Podu de Fier, Independentei, Agronomie, Târgu Cucu.

East: Tudor Vladimirescu, Bucșinescu, Tătărași North and South, Oancea, Dispecer, Flora, Grădinari, Moara de Wind, Ciurchi, Metallurgy, Aviației, Ciric, Țuțora, Zona Industrială.

South: Palace, Center, Base 3, Bularga, Frigorifer, Bucium, Socola, Frumoasa, Bellari, Poitiers-Siraj, Manta Roșie, Podu Roș, Dimitrie Cantemir, Țesătura, Nicolina 1 and 2, C.U.G. 1 and 2, Galata 1 and 2, Podu de Stone, South Industrial Zone

West: Mircea cel Bătrân, Alexandru cel Bun, Gară, Dacia, Păcurari, Canta, Păcureț, Moara de Foc

Since 2006, the municipality has started building seven neighborhood centers for Pacurari, Nicolina, Tătărași, Alexandru cel Bun, Frumoasa, Copou and Centru[1].



The Iasi metropolitan area was the first metropolitan area in Romania, established on April 8, 2004, initially comprising, besides the city of Iasi, the communes of Aroneanu, Bârnova, Ciurea, Holboca, Lețcani, Miroslava, Popricani, Reditu, Schitu Duca, Tomești, Ungheni, Valea Lupului and Victoria. Subsequently, 13 other communes became active members of the metropolitan association: Comarna, Costuleni, Dobrovăț, Golăiești, Grajduri, Mogoșești, Movileni, Prisăcani, Românească, Scânteia, Țigănași, Țuțora and Voinești.



In order to support the citizens resident in the metropolitan area, public transport means were made available to them. Thus, the connections between the residence areas and the city are easier. Public transport infrastructure has been renewed with electric vehicles. The goal is clearly defined, namely "pollution reduction". Cycle paths were created for the same purpose.



Name	Population (2021)	Population (2022)	Population (2023)	Density (loc/km ²)	Surface (km ²)
Municipiul Iași	389.020	392.813	394.546	4194	94
Aroneanu	4.283	4.335	4.507	115	39.03
Bârnova	7.453	7.753	8.128	197	41.22
Ciurea	17.583	18.318	19.214	382	50.29
Comarna	5.874	5.745	5.580	116	48.06
Costuleni	6.569	6.946	7.172	102	69.90
Dobrovăț	2.252	2.189	2.170	23	93.00
Golăiești	3.916	3.896	3.890	72	53.96
Grajiduri	7.511	7.243	6.890	167	41.20
Holboca	15.746	15.783	15.848	316	50.04
Lețcani	7.929	7.911	7.974	136	58.55
Miroslava	23.470	25.457	27.944	338	82.57
Mogoșești	5.154	5.112	5.110	75	67.72
Movileni	3.099	3.085	3.059	38	79.27
Popricani	8.468	8.448	8.458	121	69.62
Prisăcani	5.825	7.082	8.471	141	59.92
Rediu	7.845	8.113	8.529	205	41.60
Românești	1.730	1.684	1.673	43	38.59
Scânteia	11.005	13.076	14.790	356	41.43
Schitu Duca	3.975	3.898	3.857	34	114.54
Tomești	14.266	14.290	14.377	366	39.25
Tigănași	4.938	4.908	4.867	76	64.53
Tuțora	2.221	2.216	2255	59	38.07
Ungheni	4.271	4.232	4213	101	41.62
Valea Lupului	11.551	12.764	14.389	1.353	10.63
Victoria	4.439	421	4.410	71	62.16
Voinești	8.541	8.610	8.616	125	68.71
Total	587.204	600.328	610.937	210.291	1489.58

In the table below we can see how the expansion of this metropolitan area has also led to an increase in the number of inhabitants. We are dealing with a visible urban sprawl. Businessmen have other visions and are oriented to develop opportunities in these villages, which are part of the metropolitan area.

There is a real trend of urban expansion, especially through the actions of young people from Iasi. Many of them buy homes in these villages belonging to the metropolitan area. Most of the purchased homes are new, modern, connected to all utilities and benefits of an urban area (gas, electricity, sewerage), nearby shops, etc. However, most of them bring their children to schools and high schools in the city of Iasi, although also in the metropolitan area these Education facilities have been renovated to European standards.



In these metropolitan areas of Iasi, housing is being built at a fast pace. From day to day the areas with such new housing increase. Most of them are right next to Iasi, which is why it is expected that in the near future they will become neighborhoods of Iasi. In these metropolitan areas of Iasi, housing is being built at a fast pace, proving once again the urban spread in this place.



The picture can't be displayed.

The city of Iasi was and will remain a fairytale...

